

```
SQL> alter user scott account unlock;
```

```
User altered.
```

```
SQL> connect scott
```

```
Enter password:
```

```
ERROR:
```

```
ORA-28001: the password has expired
```

```
changing password for scott
```

```
new password:
```

```
Specify new password:
```

```
ORA-28001: New passwords do not match
```

```
Password unchanged
```

```
Warning: You are no longer connected to ORACLE.
```

```
SQL> connect scott
```

```
Enter password:
```

```
ERROR:
```

```
ORA-28001: the password has expired
```

```
changing password for scott
```

```
new password:
```

```
Specify new password:
```

```
password changed
```

```
Connected.
```

```
SQL> exit
```

```
Disconnected from Oracle Database 11g Enterprise Edition Release 11.2.0.3.0 - 64bit Production
```

```
With the Partitioning, Automatic Storage Management, OLAP, Data Mining
```

```
and Real Application Clusters options
```

```
[oracle@sls-s13-asm ~]$ cat /dev/null
```

```
File Edit View Search Terminal Help
sql> alter user scott account unlock;
```

```
User altered.
```

```
sql> connect scott
Enter password:
#####
ORA-28000: the password
```

```
Changing password for scott
New password:
```

```
Retype new password:
ORA-28000: new password
password unchanged.
```

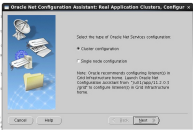
```
Warning! You are no longer
sql> connect scott
Enter password:
#####
ORA-28000: the password
```

```
Changing password for scott
New password:
```

```
Retype new password:
Password changed.
Connected.
```

```
sql> exit
Disconnected from Oracle
With the Partitioning, As
and Real Application Test
oracle@p118-asm ~12$ exit
```

```
Oracle Net Services Configurations
```



```
File Edit View Search Terminal Help
```

```
SQL> alter user scott account unlock;
```

```
user altered.
```

```
SQL> connect scott/
```

```
Enter password:
```

```
SCOTT
```

```
ORA-28001: the password
```

```
Changing password for scott
```

```
New password:
```

```
Retype new password:
```

```
ORA-28001: the password
```

```
Password unchanged
```

```
Reconnect for scott on long
```

```
SQL> connect scott/
```

```
Enter password:
```

```
SCOTT
```

```
ORA-28001: the password
```

```
Changing password for scott
```

```
New password:
```

```
Retype new password:
```

```
Password changed
```

```
Connected.
```

```
SQL> exit
```

```
Disconnected from Oracle
```

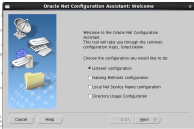
```
with the Partitioning, SQL
```

```
and Real Application Clusters
```

```
component [Oracle@ip10-113-asm ~]# cat
```

```
oracle net services configuration:
```

```
1
```



[File] [Edit] [View] [Search] [Terminal] [Help]

```
SQL> alter user scott account unlock;
```

User altered.

```
SQL> connect scott/
```

```
Enter password:
```

```
scott:
```

```
ORA-28001: the password has expired
```

```
Changing password for user  
New password:
```

```
Retype new password:
```

```
ORA-28001: the password has expired
```

```
Password unchanged
```

```
Warning: You are now logged on
```

```
SQL> connect scott/
```

```
Enter password:
```

```
scott:
```

```
ORA-28001: the password has expired
```

```
changing password for user  
New password:
```

```
Retype new password:
```

```
Password changed
```

```
Connected.
```

```
SQL> exit
```

```
Disconnected from Oracle
```

```
Work the Partitioning, ASM
```

```
and Real Application Clus
```

```
[oracle@old-s13-asm ~]$ cd /
```

```
Oracle Net Services Configuration:
```



File Edit View Search Terminal Help

SQL> alter user scott account unlock;

user altered.

SQL> connect scott

Enter password:

scott

ORA-28001: the password

Changing password for user
New password:

Re-type new password:

ORA-06501: the password

Password unchanged

Warning: You are no longer

SQL> connect scott

Enter password:

scott

ORA-28001: the password

Changing password for user
New password:

Re-type new password:

Password changed

connected.

SQL> exit

Disconnected from Oracle

1303: the Partitioning, SQL

and real application tests

|oracle@016-a13-asm -14 08/08

Oracle Net Services Configuration:



```
SQL> alter user scott account unlock;
```

```
User altered.
```

```
SQL> connect scott
```

```
Enter password:
```

```
SCOTT
```

```
ORA-28001: the password
```

```
Changing password for user
```

```
New password:
```

```
Retype new password:
```

```
ORA-0450: New password
```

```
Password unchanged
```

```
Warning: You are no longer
```

```
SQL> connect scott
```

```
Enter password:
```

```
SCOTT
```

```
ORA-28001: the password
```

```
Changing password for user
```

```
New password:
```

```
Retype new password:
```

```
Password changed
```

```
Connected.
```

```
SQL> exit
```

```
Disconnected from Oracle
```

```
with the Partitioning, As
```

```
and Real Application Test
```

```
[www@018-c13-asm ~]$ exit
```

```
Oracle Net Services Configuration
```



File Edit View Search Terminal Help

```
SQL> alter user scott account unlock;
```

User altered.

```
SQL> connect scott
```

Enter password:

SCOTT:

ORA-01031: the password is locked for the user

```
Changing password for scott
```

Enter password:

Retype new password:

ora-01031: the password is locked for the user

Password unchanged

Warnings for the following:

```
SQL> connect scott
```

Enter password:

SCOTT:

ORA-01031: the password is locked for the user

```
Changing password for scott
```

Enter password:

Retype new password:

Password changed

Connected.

```
SQL> exit
```

Disconnected from Oracle Database 11g Enterprise Edition

with the Partitioning, Advanced Analytics and Real Application Tests

option (Release 11.2.0.4.0) on 01-12-2013 at 12:00:00

```
oracle@010-c13-asm ~$
```

Oracle Net Service Configuration

Oracle Net Configuration Assistant: Net Service Name Configuration, Step 3 of 3



To communicate with the database across a network, a network protocol is used. Select the protocol used for the database intended to connect.

TCP
TCP
IPC

Cancel

Help

Back

Next

File Edit View Search Terminal Help

SQL> alter user asott account unlock;

User altered.

SQL> connect asott

Enter password:

ASOTT

ORA-28000: the password is

Changing password for user

New password:

Rtype new password:

ORA-28000: New password is

Password unchanged

Warning: You are no longer

SQL> connect asott

Enter password:

ASOTT

ORA-28000: the password is

Changing password for user

New password:

Rtype new password:

Password changed

Connected.

SQL> exit

Disconnected from Oracle

with the Partitioning, A

and New Application Test

[oracle@oil1-ali-asm ~]\$ exit

Oracle Net Services Configurations



File Edit View Search Terminal Help

```
SQL> alter user scott account unlock;
```

```
user altered.
```

```
SQL> connect scott
```

```
Enter password:
```

```
SCOTT
```

```
ORA-28001: the password
```

```
Changing password for user
```

```
New password:
```

```
Retype new password:
```

```
ORA-28001: New password
```

```
Password unchanged
```

```
Warning: You are no longer
```

```
SQL> connect scott
```

```
Enter password:
```

```
SCOTT
```

```
ORA-28001: the password
```

```
Changing password for user
```

```
New password:
```

```
Retype new password:
```

```
Password changed
```

```
Connected.
```

```
SQL> exit
```

```
Disconnected from Oracle
```

```
11g Release 11.1.0.7.0 -
```

```
and Real Application Tests
```

```
[oracle@oh4-s13-asmc ~]$ exit
```

```
oracle Net Services Configuration:
```



```
File Edit View Search Terminal Help
SQL> alter user scott account unlock;
```

```
Done altered.
```

```
SQL> connect scott
Enter password:
SCOTT:
ORA-28001: the password is
```

```
Changing password for scott
New password:
```

```
Retype new password:
ORA-28001: the password is
Password unchanged
```

```
Warning: You are no longer
SQL> connect scott
```

```
Enter password:
SCOTT:
ORA-28001: the password is
```

```
Changing password for scott
New password:
```

```
Retype new password:
Password changed
```

```
Connected.
SQL> exit
Disconnected from Oracle
With the Partitioning, SQL
and Real Application Test
console@024-c13-sec01 ~$
```

```
Oracle Net Services Configuration:
```



File Edit View Search Terminal Help

SQL> alter user scott account unlock;

User altered.

SQL> connect scott

Enter password:

scott

ORA-28001: the password

Changing password for user
New password:

Retype new password:

SQL> exit

Password changed

Warning: you are no longer

SQL> connect scott

Enter password:

scott

ORA-28001: the password

Changing password for user
New password:

Retype new password:

Password changed

Connected.

SQL> exit

Disconnected from Oracle

with the Partitioning, A

and Real Application Test

[oracle@ball-s13-asm ~]\$ cat >

Oracle Net Services Configuration:

Oracle Net Configuration Assistant: Net Service Name Configuration, C:\x



Right while the Oracle Net Configuration Assistant tries to connect to the database using the information you

Change Login

Change Login

Username: scott

Password: scott

OK Cancel

Change Login

Cancel Help

< Back Next >

username (password)

ed may be incorrect.

is provided for net service

username.

File Edit View Search Terminal Help

SQL> alter user scott account unlock;

user altered.

SQL> connect scott

Enter password:

SCOTT

ORA-01900: the password is

Changing password for user

New password:

scott-scott

ORA-01900: New password is

Password unchanged

Warning: You are now logged

SQL> connect scott

Enter password:

SCOTT

ORA-01900: the password is

Changing password for user

New password:

scott-scott

Password changed

connected.

SQL> exit

Disconnected from Oracle

with the Partitioning, SQL

and Real Application Clusters

Oracle/16.3.0.0.0 on 16 Dec 2015

Oracle Net Services Configuration



File Edit View Search Terminal Help

```
SQL> alter user smoth account unlock;
```

```
User altered.
```

```
SQL> connect smoth
```

```
Enter password:
```

```
smoth
```

```
ORA-28001: the password is
```

```
changing password for so-
```

```
oth password:
```

```
Smoth new password:
```

```
smoth-0800: New password c
```

```
password unchanged
```

```
Warning! You are no longer
```

```
SQL> connect smoth
```

```
Enter password:
```

```
smoth
```

```
ORA-28001: the password is
```

```
changing password for so-
```

```
oth password:
```

```
Smoth new password:
```

```
Password changed
```

```
connected.
```

```
SQL> exit
```

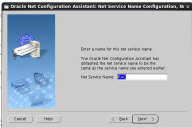
```
Disconnected from Oracle
```

```
with the Partitioning, B
```

```
and Real Application Ser
```

```
lacle@o18-a13-asm ~$ ssh
```

```
Oracle Net Services Configuration:
```



hostname@6028-613-asm:~\$ ssh root@6028-613-asm

Oracle Net Configuration Assistant: Net Service Name Configuration, N: x



 The Net Service Name already exists. Please choose another name

OK

Cancel

Help

< Back

Next >

File Edit View Search Terminal Help

root@old-s13-asm: Desktop/1.1.1.1 -

Oracle Net Configuration Assistant: Net Service Name Configuration, No. 1

File
Edit
View
Search
Terminal
Help

Enter a name for this net service alias.

The Oracle Net Configuration Assistant has defaulted the net service name to be the same as the service name you entered earlier.

Net Service Name:

Cancel

Help

< Back

Next >

File Edit View Search Terminal Help

root@kali:~#

CrackMap Configuration Assistant: Net Service Name Configuration, A



Would you like to configure another net service name?

No

Yes

Cancel

Help

< Back

Next >

File Edit View Search Terminal Help

root@ip01-113-aaa:~# ssh root@ip01-113-aaa

root@ip01-113-aaa:~#
root@ip01-113-aaa:~#
root@ip01-113-aaa:~#
root@ip01-113-aaa:~#

Oracle Net Configuration Assistant: Net Service Name Configuration, As a



Problem in configuration: app:
/u01/app/oracle/product/11.2.0.3
/u01_1/network/admin/tnsnames.ora: file such file or
directory: failed; /u01/app/oracle/product/11.
2.0.3/admin/network/admin/tnsnames.ora: file such
file or directory: failed

Try again?

Yes

No

Cancel

Help

< Back

Next >

File Edit View Search Terminal Help

root@old-ol6-asm: ~# top

Oracle Net Configuration Assistant: Net Service Name Configuration, An



Problem in configuration: tns:
path [/app/oracle/product/11.1.0.3
/lib_1/network/admin/tnames.ora: No such file or
directory: failed] path [/app/oracle/product/11.
1.0.3/lib_1/network/admin/tnames.ora: No such
file or directory: failed]

Try again?

Yes

No

Cancel

Help

< Back

Next >

File Edit View Search Terminal Help

oracle@ali-a13-asm Desktop:~\$ nmaping 192.1

run nmap utility for alias: version 1.2.0.1.0 - production on 25-mar-2014 18:53:11.

Copyright 1st 1997, 2011, Oracle. All rights reserved.

Used parameter files:

Used NMAPS adapter to resolve the alias

Attempting to contact [DESCRIPTION = [ADDRESS_LIST = [ADDRESS = [PROTOCOL = TCP] (HOST = ali-a13-asm.localdomain) (PORT = 1521)]] CONNECT_DATA = [SERVICE_NAME = 192.1]

OR 19 2531

oracle@ali-a13-asm Desktop:~\$ █

```
File Edit View Search Terminal Help
```

```
oracle@ali-r13-asm desktop:~$ ping -c 1
```

```
Telnet Ping Utility for Linux: Version 11.2.8.3.0 - Production on 25-MAY-2014 18:53  
v21
```

```
Copyright (c) 1987, 2010, Oracle. All rights reserved.
```

```
Used parameter file:
```

```
used tnsnames adapter to resolve the alias
```

```
attempting to contact (DESCRIPTION = (ADDRESS_LIST = (ADDRESS = (PROTOCOL = TCP)  
(HOST = ali-r13-asm.localdomain) PORT = 1521)) (CONNECT_DATA = (SERVICE_NAME =  
ASM)))
```

```
OK (0 msec)
```

```
oracle@ali-r13-asm desktop:~$ sqlplus scott@asm
```

```
SQL> Oracle Release 11.2.8.3.0 Production on Sun May 25 18:53:34 2014
```

```
Copyright (c) 1982, 2010, Oracle. All rights reserved.
```

```
Enter password:
```

```
Connected to:
```

```
Oracle Database 11g Enterprise Edition Release 11.2.8.3.0 - 64bit Production  
with the Partitioning, Automatic Storage Management, OLAP, Data Mining  
and Real Application Testing options
```

```
SQL> █
```

File Edit View Search Terminal Help

oracle@old-ali-asm Desktop:~\$ ping -c 1 rac

PING: Ping Utility for Linux: Version 11.2.0.3.0 - Production on 20-MAY-2014 18:54:13

Copyright (c) 1987, 2001, Oracle. All rights reserved.

Used parameter files:

Used TNSNAMES adapted to resolve the alias

Attempting to contact (DESCRIPTION = (ADDRESS = (PROTOCOL = TCP)HOST = old-ali-asm.localdomain)PORT = 1521))

TNSOA = (SERVER = DEDICATED) (SERVICE_NAME = RAC1)

OK: 1/0 ms

oracle@old-ali-asm Desktop:~\$ ping -c 1 rac1

PING: Ping Utility for Linux: Version 11.2.0.3.0 - Production on Sun May 20 18:54:27 2014

Copyright (c) 1987, 2001, Oracle. All rights reserved.

Enter password:

Connected to:

Oracle Database 11g Enterprise Edition Release 11.2.0.3.0 - 64-bit Production

With the Partitioning, Automatic Storage Management, OLAP, Data Mining

and Real Application Testing options

SQL>