

155.158.128.75 - vSphere Client

File Edit View Inventory Administration Plug-ins Help

Home Inventory Inventory

155.158.128.75  
NFS2019P09  
NFS2019P09

owbu09

Getting Started Summary Resource Allocation Performance Events Console Permissions

Power  
Guest  
Snapshot  
Open Console  
**Edit Settings...**  
Upgrade Virtual Hardware  
Add Permission... Ctrl+P  
Report Performance...  
Rename  
Open in New Window... Ctrl+Alt+N  
Remove from Inventory  
Delete from Disk

Virtual Machine?

software computer that, like a  
operating system and  
operating system installed on a virtual  
host operating system.

Virtual Machine is an isolated computing  
environment. You can use virtual machines as desktop or  
server environments, as testing environments, or to  
run applications.

Virtual machines can run on hosts. The same host can run  
multiple virtual machines.

Virtual Machines

Host

vSphere Client

Basic Tasks

- ▶ Power on the virtual machine
- ▶ Edit virtual machine settings

1. Działania przeprowadź na **wyłączonej** maszynie.
2. Kliknij prawym przyciskiem na maszynie, dla której chcesz mieć większe rozdzielczości ekranu.
3. Z menu wybierz **Edit Settings...**



- 155.158.128.75
- NFS2019P09
- owbu09
- NFS2019P09old

owbu09

Getting Started Summary Resource Allocation Performance Events Console Permissions

close tab X

### What is a Virtual Machine?

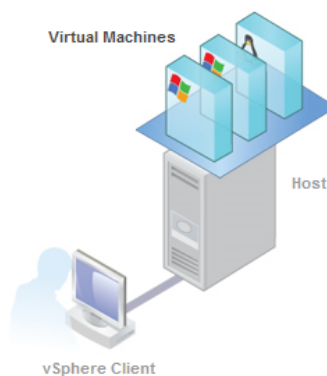
A virtual machine is a software computer that, like a physical computer, runs an operating system and applications. An operating system installed on a virtual machine is called a guest operating system.

Because every virtual machine is an isolated computing environment, you can use virtual machines as desktop or workstation environments, as testing environments, or to consolidate server applications.

Virtual machines run on hosts. The same host can run many virtual machines.

### Basic Tasks

- Power on the virtual machine
- Edit virtual machine settings



owbu09 - Virtual Machine Properties

Hardware Options Resources
Virtual Machine Version: 7

Show All Devices
 Add...
Remove

Hardware	Summary
Memory	4096 MB
CPUs	1
IDE 0	(No Settings)
IDE 1	(No Settings)
PS2 controller 0	(No Settings)
PCI controller 0	(No Settings)
SIO controller 0	(No Settings)
Keyboard	(No Settings)
Pointing device	(No Settings)
Video card	Video card
VME device	Deprecated
SCSI controller 0	LSI Logic Parallel
CD/DVD drive 1	[NFS2019U09bkp] OL6...
Hard disk 1	Virtual Disk
Hard disk 2	Virtual Disk
Hard disk 3	Virtual Disk
Hard disk 4	Virtual Disk
Hard disk 5	Virtual Disk
Hard disk 6	Virtual Disk
Hard disk 7	Virtual Disk
Floppy drive 1	Client Device
Network adapter 1	VM Network for BI Stu...

**Memory Configuration**

Memory Size:  GB

255 GB

128 GB

64 GB

32 GB

16 GB

8 GB

4 GB

2 GB

1 GB

512 MB

256 MB

128 MB

64 MB

32 MB

16 MB

8 MB

4 MB

Maximum recommended for this guest OS: 255 GB.

Maximum recommended for best performance: 196388 MB.

Default recommended for this guest OS: 1 GB.

Minimum recommended for this guest OS: 32 MB.

OK Cancel

4. W nowym oknie powinny pojawić się zainstalowane w maszynie urządzenia.
5. Zaznacz opcję **Show All Devices**.
6. Z listy urządzeń wybierz Video card.



- 155.158.128.75
- NFS2019P09
- owbu09
- NFS2019P09old

owbu09

Getting Started Summary Resource Allocation Performance Events Console Permissions

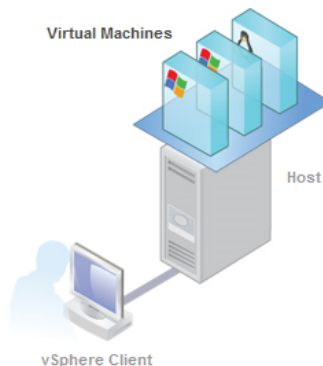
close tab X

### What is a Virtual Machine?

A virtual machine is a software computer that, like a physical computer, runs an operating system and applications. An operating system installed on a virtual machine is called a guest operating system.

Because every virtual machine is an isolated computing environment, you can use virtual machines as desktop or workstation environments, as testing environments, or to consolidate server applications.

Virtual machines run on hosts. The same host can run many virtual machines.



### Basic Tasks

- [Power on the virtual machine](#)
- [Edit virtual machine settings](#)

7. Zaznacz opcję **Auto-detect settings** następnie kliknij OK.
8. Włącz maszynę wirtualną i zaloguj się do systemu.

owbu09 - Virtual Machine Properties
Virtual Machine Version: 7

Hardware | Options | Resources

Show All Devices

Hardware	Summary
Memory	4096 MB
CPUs	1
IDE 0	(No Settings)
IDE 1	(No Settings)
PS2 controller 0	(No Settings)
PCI controller 0	(No Settings)
SIO controller 0	(No Settings)
Keyboard	(No Settings)
Pointing device	(No Settings)
<b>Video card (edited)</b>	<b>Video card</b>
VMCI device	Deprecated
SCSI controller 0	LSI Logic Parallel
CD/DVD drive 1	[NFS2019U09bkp] OL6...
Hard disk 1	Virtual Disk
Hard disk 2	Virtual Disk
Hard disk 3	Virtual Disk
Hard disk 4	Virtual Disk
Hard disk 5	Virtual Disk
Hard disk 6	Virtual Disk
Hard disk 7	Virtual Disk
Floppy drive 1	Client Device
Network adapter 1	VM Network for BI Stu...

Displays and video memory

Auto-detect settings  
 Specify custom settings:

Number of displays:

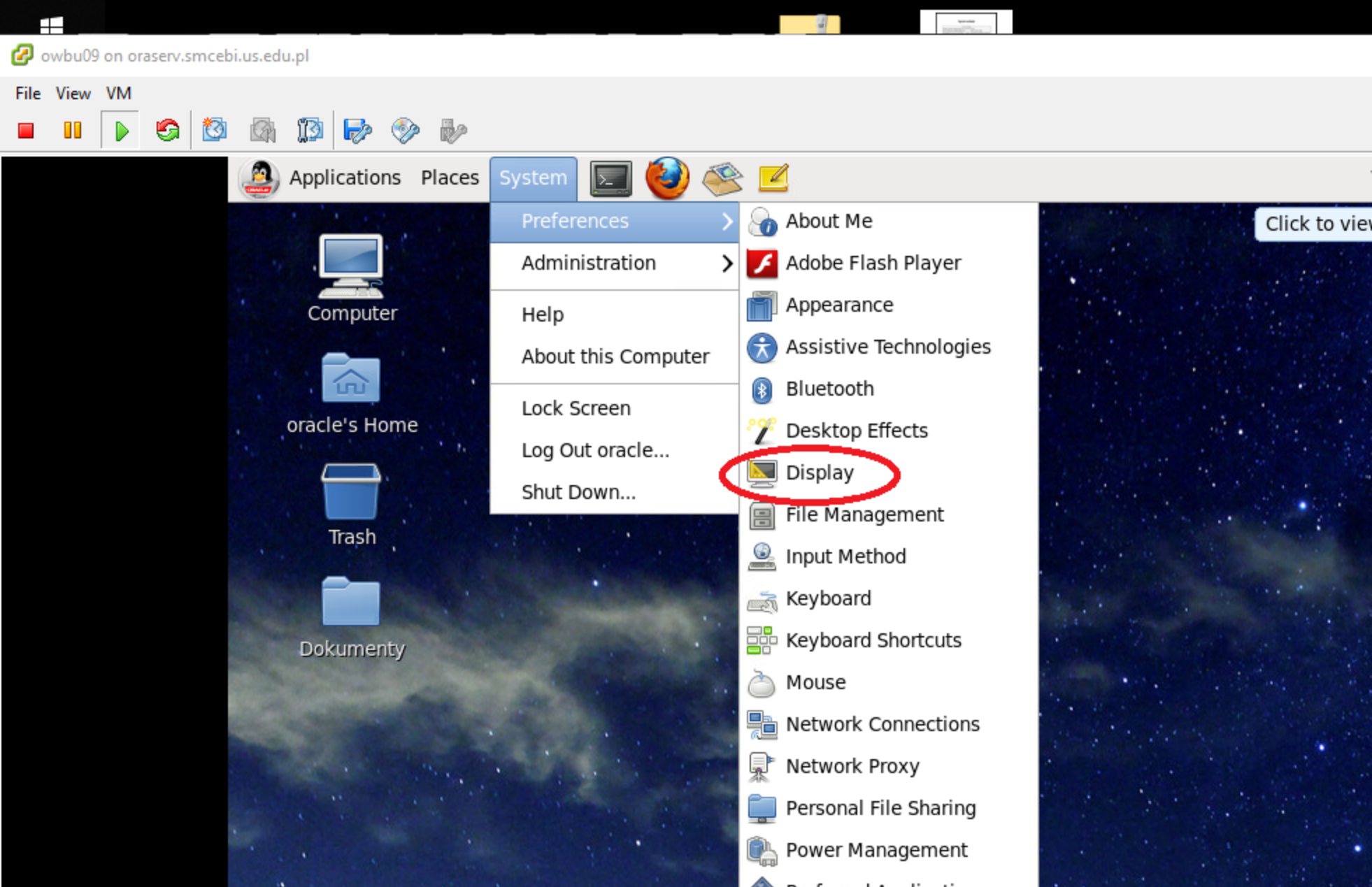
Maximum number of displays the video card will support.

Total video memory:  MB

The memory reserved for the video card. It must be between 1,18 MB and 128 MB.

3D graphics

Enable 3D support



9. Wybierz na pasku **System** -> **Display**.



Unknown

- Computer
- oracle's Home
- Trash
- Dokumenty

### Display Preferences

Drag the monitors to set their place

Mirror screen

**Monitor: Unkn**

On  Off

Resolution:

Refresh rate:

**Panel icon**

Show display panel icon

2560 x 1600  
2048 x 1536  
1920 x 1440  
1856 x 1392  
1792 x 1344  
1920 x 1200  
1920 x 1080  
1600 x 1200  
1680 x 1050  
1400 x 1050  
1280 x 1024  
1440 x 900  
1280 x 960  
1366 x 768  
1360 x 768

Detect Monitors

Rotation: Normal

Apply Close

10. W nowym oknie możesz już wybrać większe rozdzielczości. Polecana rozdzielczość to 1920 x 1080.